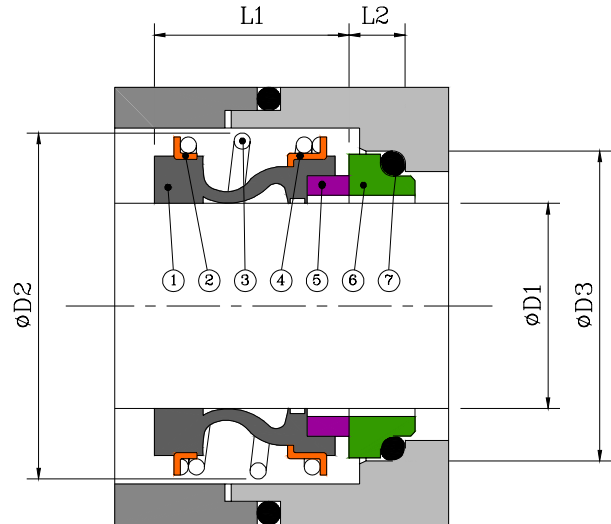
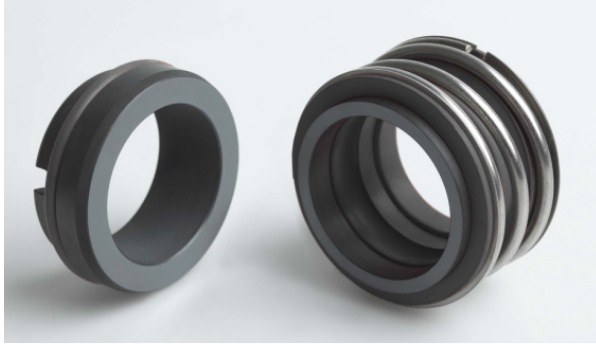


Type-ZG1



Design Features

- The elastomer bellows seal designed for self-aligning feature compensates for excessive shaft end play and run-out.
- Non-clogging single coil spring for dependability.
- Independent of shaft rotating direction.

Operating Conditions

- Max. Operating Pressure : 8 kg/cm² *
- Temperature Range : -20 to 200 °C *
- Max. Rubbing Speed : 10 m/sec

* (Depend on combination of materials)

Standard Materials

Metal Parts	: 316 SS
Springs	: 316 SS
Rotary Face	: Carbon
Stationary Face	: Solid Silicon Carbide
Secondary Seals	: Nitrile-butadiene Rubber

* Other configuration of materials also available on request.

Seal Size (D1)	D2	D3	L1	L2
10	22.5	21	14.5	10.0
12	25.0	23	15.0	10.0
14	28.5	25	17.0	10.0
16	28.5	27	17.0	10.0
18	32.0	33	19.5	11.5
20	37.0	35	21.5	11.5
22	37.0	37	21.5	11.5
24	42.5	39	22.5	11.5
25	42.5	40	23.0	11.5
28	49.0	43	26.5	11.5
30	49.0	45	26.5	11.5
32	53.5	48	27.5	11.5
33	53.5	48	27.5	11.5
35	57.0	50	28.5	11.5
38	59.0	56	30.0	14.0
40	62.0	58	30.0	14.0
43	65.5	61	30.0	14.0
45	68.0	63	30.0	14.0
48	70.5	66	30.5	14.0
50	74.0	70	30.5	15.0
53	78.5	73	33.0	15.0
55	81.0	75	35.0	15.0
58	85.5	78	37.0	15.0
60	88.5	80	38.0	15.0
65	93.5	85	40.0	15.0

* Inch size is available upon request.