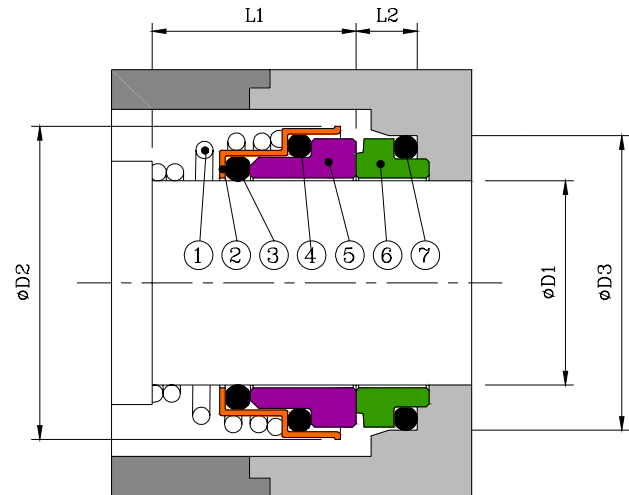
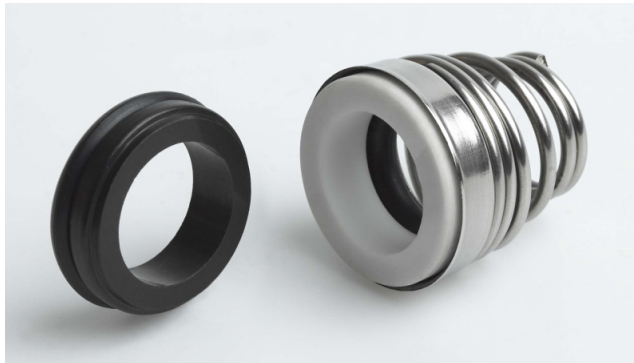


Type-33



Design Features

- Unbalanced
- Conical single coil spring
- Non-clogging single coil spring for dependability.

Operating Conditions

- Max. Operating Pressure : 10 kg/cm² *
- Temperature Range : -20 to 100 °C *
- Max. Rubbing Speed : 20 m/sec

* (Depend on combination of materials)

Standard Materials

- Metal Parts : 316 SS
 Springs : 316 SS
 Rotary Face : Ceramic
 Stationary Face : Carbon
 Secondary Seals : Nitrile-butadiene Rubber

* Other configuration of materials also available on request.

Seal Size (D1)	D2	D3	L1	L2
10	19.5	18.1	15	5.5
11	22.5	20.3	18	5.5
12	22.5	20.3	18	5.5
13	24.5	23.1	22	6.0
14	29.0	23.1	22	6.0
15	29.0	26.9	22	7.0
16	29.0	26.9	23	7.0
17	29.0	26.9	23	7.0
18	32.5	30.9	24	8.0
19	32.5	30.9	25	8.0
20	32.5	30.9	25	8.0
22	37.5	35.4	25	8.0
24	37.5	35.4	27	8.0
25	40.0	38.2	27	8.5
28	46.0	43.3	29	9.0
30	46.0	43.3	30	9.0
32	46.0	43.3	30	9.0
35	50.0	53.5	39	11.5

* Inch size is available upon request.