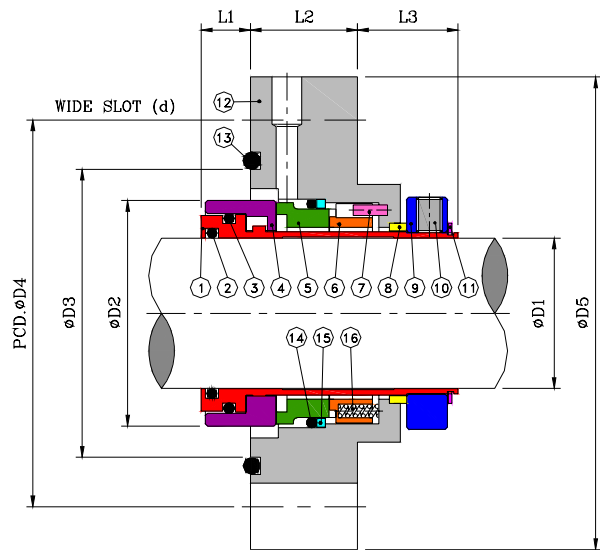
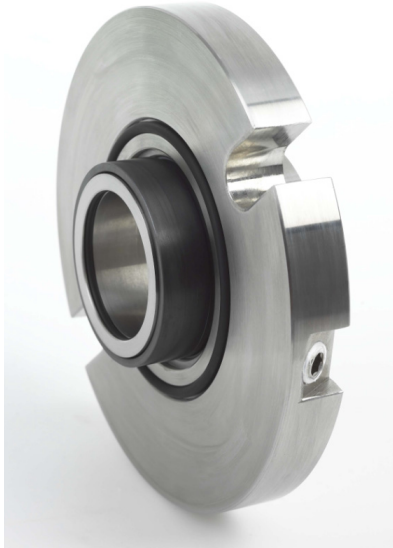


# Type-111



## Design Features

- The balanced cartridge construction makes the suitable for a wide range of demanding applications.
- Due to the cartridge construction the seal can be easily installed.
- The springs of the seal are located in the stationary housing outside of the product.
- Premium-grade silicon carbide solid seal faces are excellent for high temperature, high speed pumps and enduring abrasive fluids.
- Unique centralizing ring PTFE provided no setting clips to be removed or lost.
- No drive screw damage to shaft or sleeve.

## Operating Conditions

- Max. Operating Pressure : 30 kg/cm<sup>2</sup> \*
- Temperature Range : -20 to 200 °C \*
- Max. Rubbing Speed : 20 m/s

\* (Depend on combination of materials)

## Standard Materials

- Metal Parts : 316 SS
- Springs : 316 SS
- Rotary Face : Solid Silicon Carbide
- Stationary Face : Solid Silicon Carbide
- Secondary Seals : Fluorocarbon Rubber

\* Other configuration of materials also available on request.

Seal Size (D1)	D2	D3	D4	D5	L1	L2	L3	d
25	42.5	53	77	100	11.5	25	23.5	11
28	44.5	53	77	100	11.5	25	23.5	11
30	47.0	57	80	105	11.5	25	23.5	11
32	49.0	60	84	110	11.5	25	23.5	11
35	52.5	62	86	110	11.5	25	23.5	14
38	55.5	66	90	115	11.5	25	23.5	14
40	57.5	69	95	115	11.5	25	23.5	14
43	60.5	70	98	120	11.5	25	23.5	14
45	65.5	72	98	125	11.5	25	23.5	14
48	65.5	73	98	125	11.5	25	23.5	14
50	67.5	77	102	130	11.5	25	23.5	14
55	73.0	82	110	135	11.5	25	23.5	14
60	78.0	88	115	140	11.5	25	23.5	17

\* Inch size is available upon request.