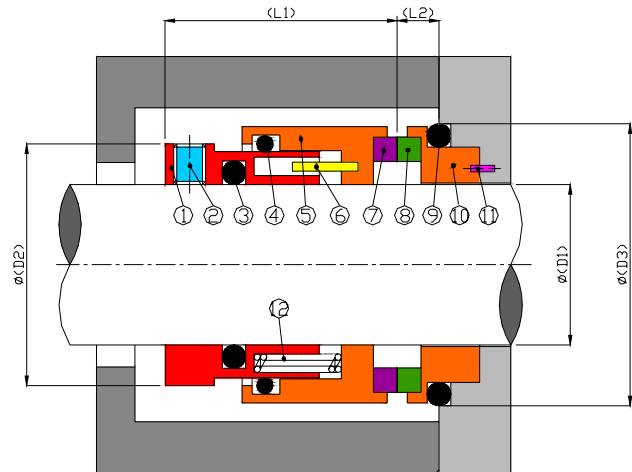
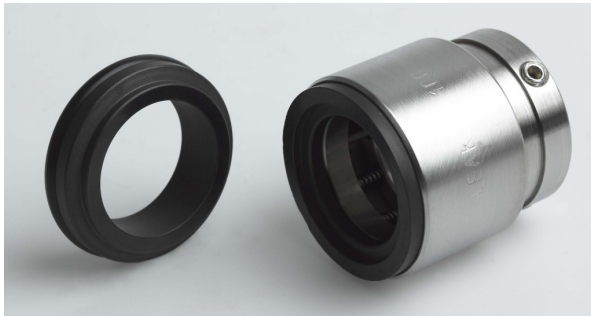


# Type-100



## Design Features

- Balanced
- Springs are isolated from sealed liquid
- Setting-length is short
- Shrink-fitted seal faces can be easily replaced with other materials

## Operating Conditions

- Max. Pressure : 12 Kg / cm<sup>2</sup>
  - Temperature Range : -30 to 200 °c
  - Max. Rubbing Speed : 15 m/sec
- \* (Depend on combination of materials)

## Standard Materials

- Metal Parts : 316 SS
- Springs : 316 SS
- Rotary Face : Silicon Carbide
- Stationary Face : Silicon Carbide
- Secondary Seal : Fluorocarbon rubber

\* Other configuration of materials also available on request

Seal Size (D1)	D2	D3	L1	L2
20	34.5	35	34	8
22	36.5	35	34	8
24	38.5	39	34.5	8
25	39.5	40	34.5	8
28	43.5	43	34.5	8
30	44.5	45	34.5	8
32	46.5	48	34.5	8
33	47.5	48	34.5	8
35	49.5	50	35.5	8
38	55	56	35.5	8.5
40	57	58	35.5	8.5
45	62	63	35.5	8.5
50	67	68	35.5	8.5
55	72	73	37.5	8.5
60	80	81	39.0	9.5
65	87	86	39.0	9.5

\* Inch size is available upon request.